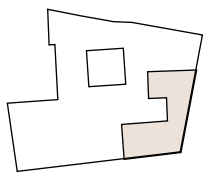


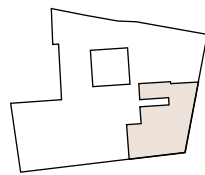
PONT I VIC

ANNO MDXXXI

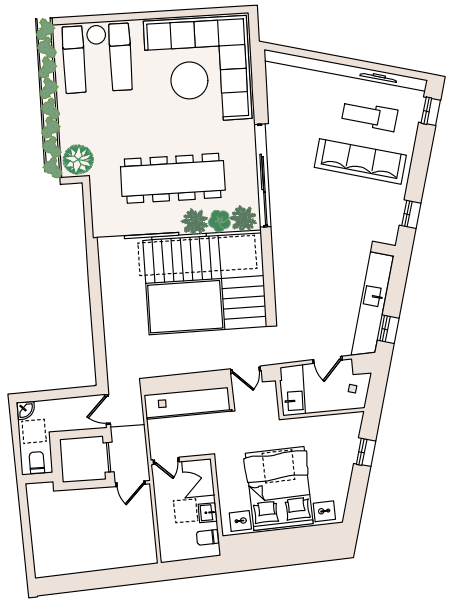
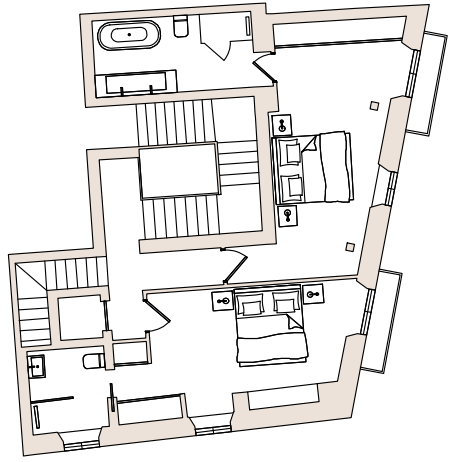
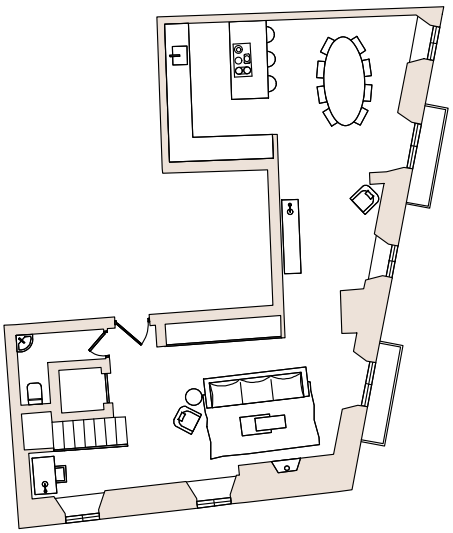
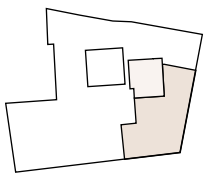
Second Floor



Third Floor



Fourth Floor



Penthouse 4

Built area: 289m² Terrace: 49m²



- 3 bedrooms with en-suite bathrooms
- Powder room
- 65m² open-plan kitchen & living room
- Street facing rooms with balconies
- 3.20m high ceiling in living areas
- Loft room can be turned into 4th bedroom
- 49m² private roof terrace including upper terrace with panoramic sea and cathedral views

