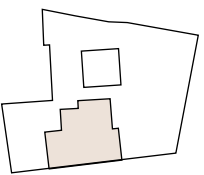


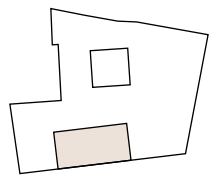
# PONT I VIC

ANNO MDXXXI

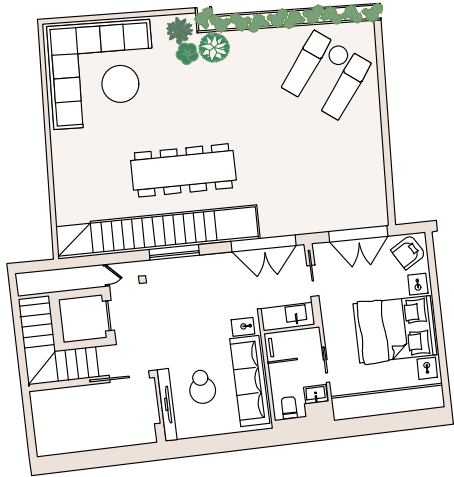
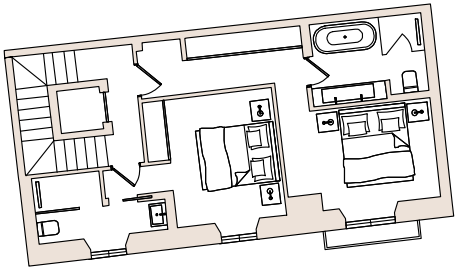
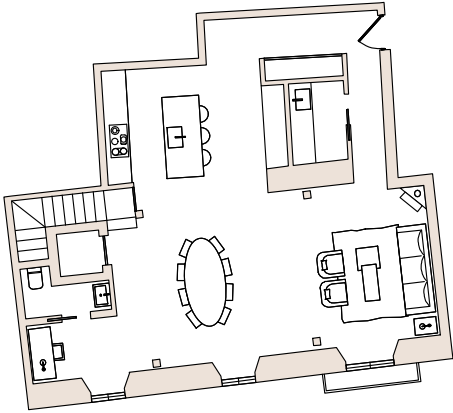
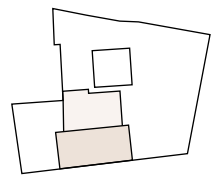
Second Floor



Third Floor



Fourth Floor



## Penthouse 2

Built area: 223m<sup>2</sup> Terrace: 57m<sup>2</sup>



- 3 bedrooms with en-suite bathrooms
- Powder room
- 60m<sup>2</sup> open-plan kitchen & living room
- 3.20m high ceiling in living areas
- Loft room can be turned into 4th bedroom
- 57m<sup>2</sup> private roof terrace with cathedral view
- Viewing tower with panoramic sea and cathedral views

